

Tic Tac

KIM SCHAEFER



Painter's Palette Quilt
designed by: **Kim Schaefer**

Quilt Size: **60" x 72"**

Skill Level: **Beginner**

Painter's Palette

Introducing Andover Fabrics new collection: TIC TAC by Kim Schaefer • Quilt designed by Kim Schaefer

Quilt finishes 60" x 72" • 120 Blocks: 6" x 6"

You will experience all the excitement of opening up a new box of crayons or a new box of paints when you work with these fabrics. The colors range from white to black, with everything in between. Choose a light or dark background for the simple blocks.

Fabric Requirements

		Yardage	Fabric
*Fabric A	blocks	4 yards	1235-L
23 Prints	blocks	fat ¼ ea.	
1235-B	1235-B1	1235-B2	1235-C
1235-C1	1235-E	1235-E1	1235-G
1235-G1	*1235-K	1235-N	1235-N1
1235-N2	1235-N3	1235-O	1235-P
1235-R	1235-R1	1235-R2	1235-T
1235-V	1235-Y	1235-Y1	
*Binding		⅝ yard	1235-L
*Backing		4 yards	1235-L

Also needed: 4½ yards of 20"-wide lightweight fusible webbing

Pinking shears or rotary cutter pinking blade or another decorative blade

*Note: If you are making the black background version, substitute Fabric 1235-K (black fabric) for Fabric A 1235-L (bone fabric).

Cutting Directions

Note: Read assembly directions before cutting patches. All measurements are cut sizes and include ¼" seam allowances. A fat ¼ is an 18" x 20"-22" cut. WOF designates the width of fabric from selvedge to selvedge (approximately 42" wide).

*Fabric A

Cut (120) squares 6½" x 6½"

23 Prints

From each of 18: Cut (5) squares 5" x 5" (Read Step 1 first)
From each of 5: Cut (6) squares 5" x 5"

Binding

Cut (7) strips 2½" x WOF for binding

Backing

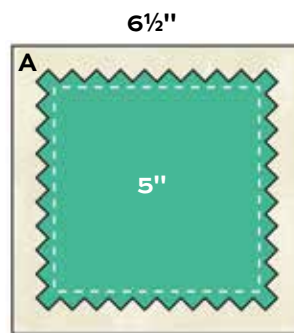
Cut (2) lengths 41" x 70", pieced to fit quilt top with overlap on all sides

Making the Quilt

1. Note: Yardage is generous to allow you to cut more or fewer squares from each color. Directions are for fusing the colored squares to the background. Each fabric is used 5 or 6 times in the quilt. Cut 30 rectangles of lightweight fusible webbing 5" x 20". Fuse a rectangle to the wrong side of each of 23 fabrics following manufacturer's directions. Cut 4 squares 5" x 5" from each fused fabric with the rotary cutter pinking blade if you are using one. Or, you may prefer to cut the squares first with a straight rotary blade, and then trim each square with pinking shears.

Cut each of the remaining 7 rectangles of webbing into 4 squares 5" x 5". Choose 5 of the 23 fabrics you wish to use 6 times in the quilt. The other 18 will be used 5 times each. Fuse 2 of the 5" squares of webbing onto the wrong side of the chosen 5 fabrics. Fuse 1 of the 5" squares of webbing onto the wrong side of remaining 18 fabrics. Cut squares and trim the edges as described above. You should have a total of 120 colored squares.

2. Remove the paper backing from a square. Center and fuse the square to a 6½" Fabric A square. Use a straight stitch to machine sew just inside the edge of the pinked edges (Block Diagram). Repeat to make 120 blocks.



Block Diagram

3. Referring to the Quilt Diagram, join 10 blocks to make a horizontal row, arranging the colors as shown in the quilt or as you wish. Make 12 rows. Join the rows.

Finishing the Quilt

4. Layer the quilt with batting and backing and baste. Quilt in the ditch around blocks. Quilt inside each colored square as you wish. Bind to finish the quilt.

Painter's Palette Quilt



Quilt Assembly

Tic Tac

KIM SCHAEFER



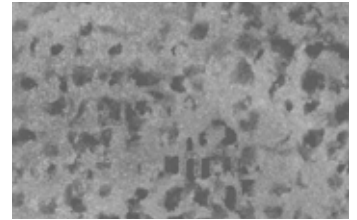
1235-B



1235-B1



1235-B2



1235-C



1235-C1



1235-E



1235-E1



1235-G



1235-G1



1235-K



1235-L



1235N



1235-N1



1235-N2



1235-N3



1235-O



1235-P



1235-R



1235-R1



1235-R2



1235-T



1235-V



1235-Y



1235-Y1

All fabrics are used in quilt pattern. Fabrics shown are 100% of actual size.

Free Pattern Download Available

1384 Broadway, 24th Floor, New York, NY 10018

Tel. (800) 223-5678 • andoverfabrics.com